



DUN LAOGHAIRE MARINA WEATHER FORECAST



Duty forecaster: Alexi Venerus, alexi@weatherweb.net

All times are GMT. Wind speeds in knots.

Bespoke forecasts are available at <http://www.sailingweather.co.uk>

Forecast for Dun Laoghaire Marina and the Irish Sea 90km from Marina

Thursday 15th June 2023:

Dry and fine this afternoon with possible fair weather cloud building and pushing across the area.

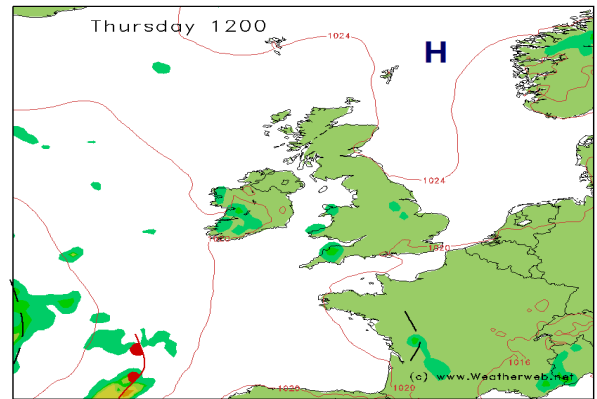
Visibility will be excellent.

Sea state will be slight.

Winds:

Dun Laoghaire
1500 E 5-10kt
1800 E 5-10kt
2100 E 4-8kt

Irish Sea
E 4-8kt
E 4-8kt
ESE 4-8kt



Friday 16th June 2023:

A cloudier day today. It should be a dry morning but the risk of a shower increases heading into and through the afternoon. A light SE'ly breeze though could pick up slightly in a passing shower. A shower risk continues in the evening and overnight.

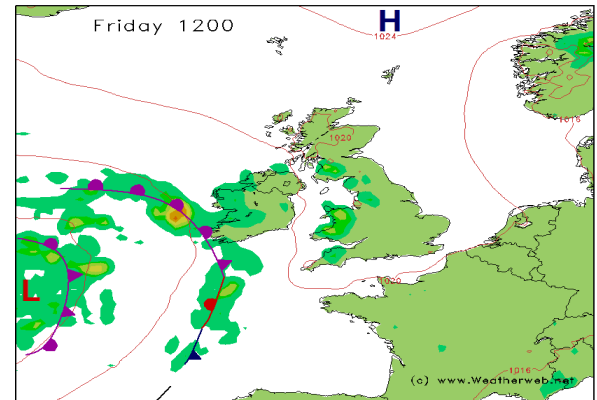
Visibility will be good generally but will lower in any showers.

Sea state will be slight.

Winds:

Dun Laoghaire
0001 VAR 1-4kt
0600 VAR 1-4kt
0900 SE 4-8kt
1200 SE 4-8kt
1500 SE 5-10kt
1800 SE 5-10kt
2100 SE 4-8kt

Irish Sea
SE 4-8kt
SE 4-8kt
SE 5-10kt
SE 5-10kt
SE 5-10kt
SE 5-10kt
SSE 5-10kt

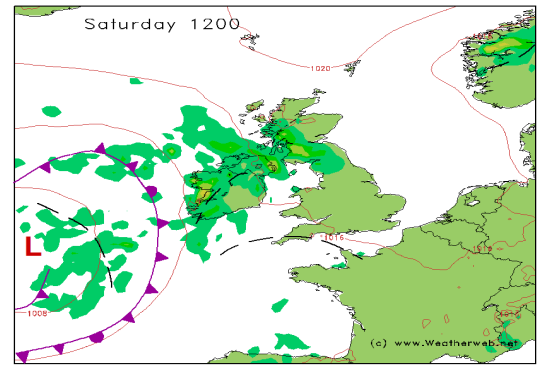


Saturday 17th June 2023:

Low pressure sits just to the west of Ireland on Saturday. A few passing showers are likely during the morning, with the afternoon currently looking to be drier with the chance for some sunny spells to develop, though a shower risk is still there. Visibility will be moderate to poor within any showers, otherwise good. Sea state will be slight.

Winds:

Dun Laoghaire	Irish Sea
0001 SE 2-5kt	SSE 5-10kt
0600 SE 4-8kt	SSE 5-10kt
0900 SE 5-10kt	SE 8-12kt
1200 SE 8-12kt	S 10-15kt
1500 SE 5-10kt	S 8-12kt
1800 SSE 2-5kt	S 8-12kt
2100 SE 2-5kt	SSE 5-10kt

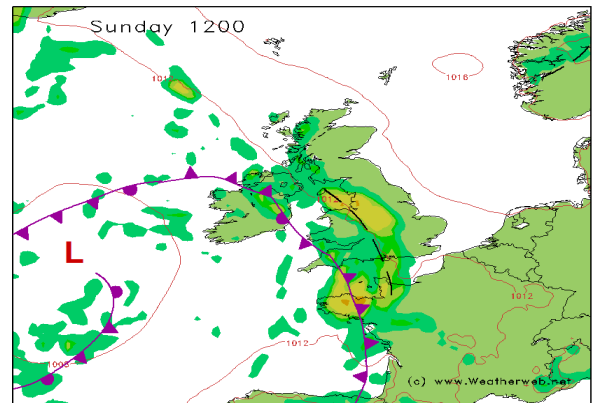


Sunday 18th June 2023:

Potentially a rather unsettled day on Sunday with cloudy skies and developing showers as well as possible longer spells of rain across the marina and just offshore. Generally, a light to moderate south-easterly wind though could become gusty within the showers. A possible brighter end of the day. Visibility will be moderate to poor within any showers. Sea state will be slight.

Winds:

Dun Laoghaire	Irish Sea
0001 SE 2-5kt	SSE 5-10kt
0600 ESE 4-8kt	SE 5-10kt
0900 ESE 4-8kt	ESE 8-12kt
1200 E 2-5kt	ESE 5-10kt
1500 ESE 2-5kt	ESE 5-10kt
1800 ESE 2-5kt	SE 5-10kt
2100 SE 2-5kt	SSE 5-10kt



ends